



SAVED AND RECORDED
by Celia Houghton

Timeline

14 May 2019 - Death of the Artist

May 2019 - Collection of possessions & artworks by family

29 May 2019 -

A visit to the Art Studio/Flat before flat's contents are discarded

- Photographic recording of flat/studio.....3
- Saved works, notebooks & photos

6 June 2019 -

Funeral - hearing & sharing stories with artist's friends and family

- Poem at funeral.....8

3 July 2019 - Saved Artworks photographed in their boxes and stacked...10

3 July 2019 - Saved Artworks photographed.....18

Future

Catalogue saved artworks

Locate other works & catalogue

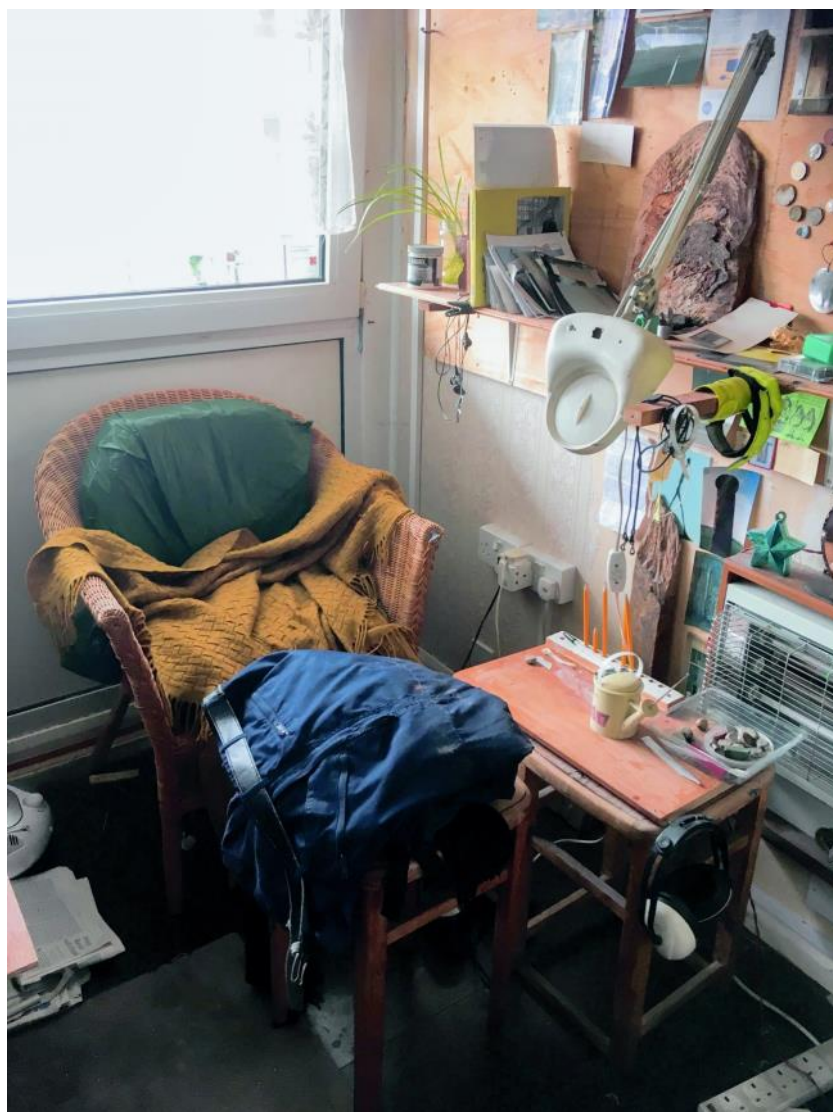
Research Artist

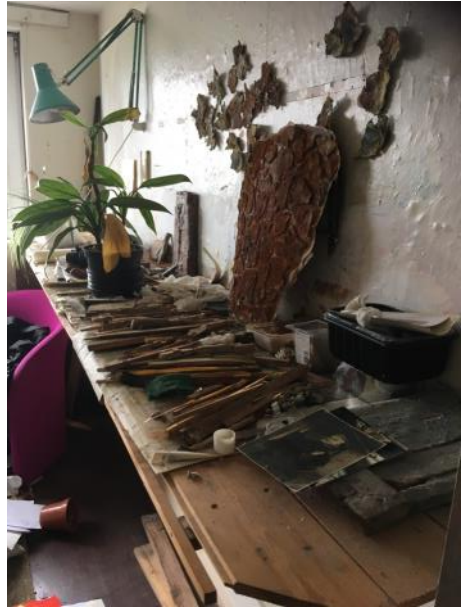
Solo Exhibition of Artist's work

Catalogue of Artist's work

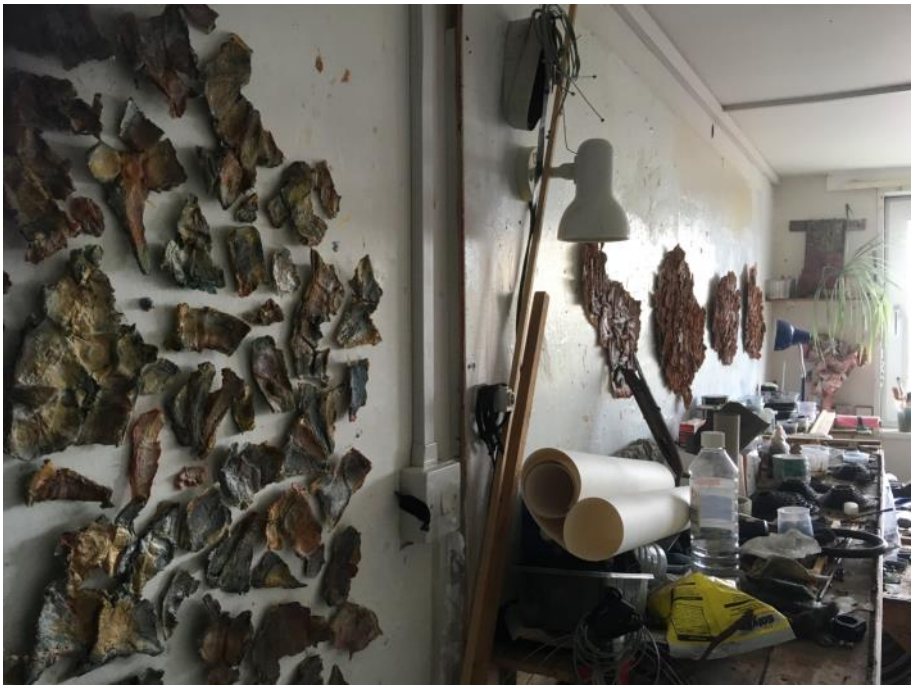
On-line Presence

Distribute artwork - donations to charity











MAKE YOUR MARK.

In the quarries should you toil,
Make your mark,

Do you delve upon the soil,
Make your mark,

In whatever path you go,
In whatever place you stand,
Moving swift or moving slow,
With a firm and honest hand
Make your mark.

Should opponents hedge your way,
Make your mark,

Work by night or work by day,
Make your mark,

Struggle manfully and well,
Let no obstacles oppose,
None right-shielded ever fell
By the weapons of his foes,
Make your mark.

What though born a peasant's son,
Make your mark,

Good by poor men can be done,
Make your mark.

Peasant's garbs may warm the cold,
Peasant's words may calm a fear,
Better far than hoarding gold
Is the drying of a tear,
Make your mark.

Life is fleeting as a shade,
Make your mark,

Marks of some kind must be made,
Make your mark,

Make it while the arm is strong,
In the golden hours of youth,
Never, never make it wrong,
Make it with the stamp of truth,
Make your mark.

BY DAVID BARKER

Circ 1840



















I'm not trying to make art - just sense! Chris Barlow 22.6.93













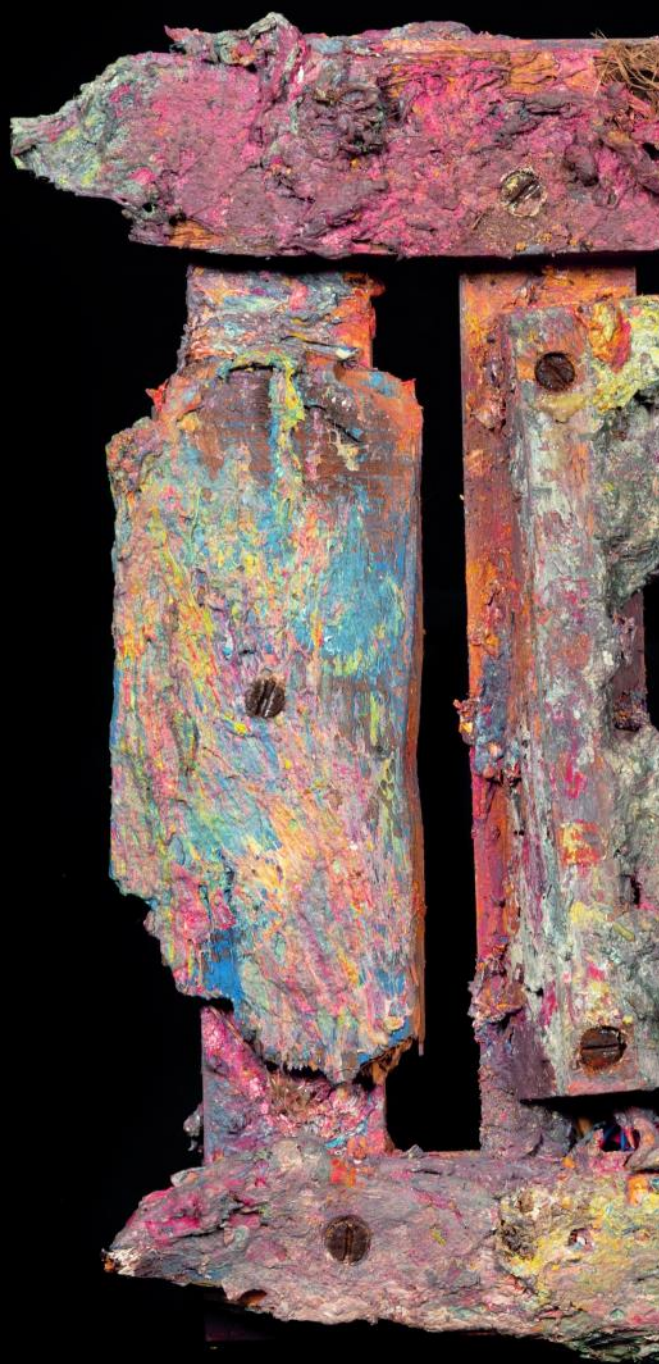










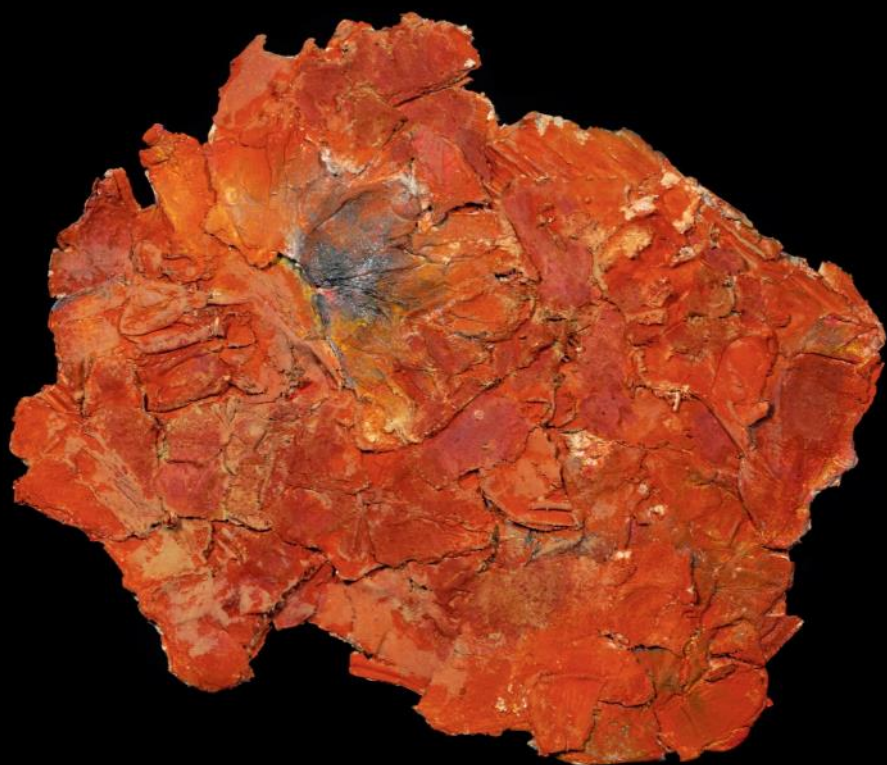












In memory of Chris Barlow
1937-2019
Birmingham Artist
Life Model
Friend

Thank you to
Lucy Barlow
Edwina Barlow
Ian & Chris Birch



BIRMINGHAM CITY
School of Art